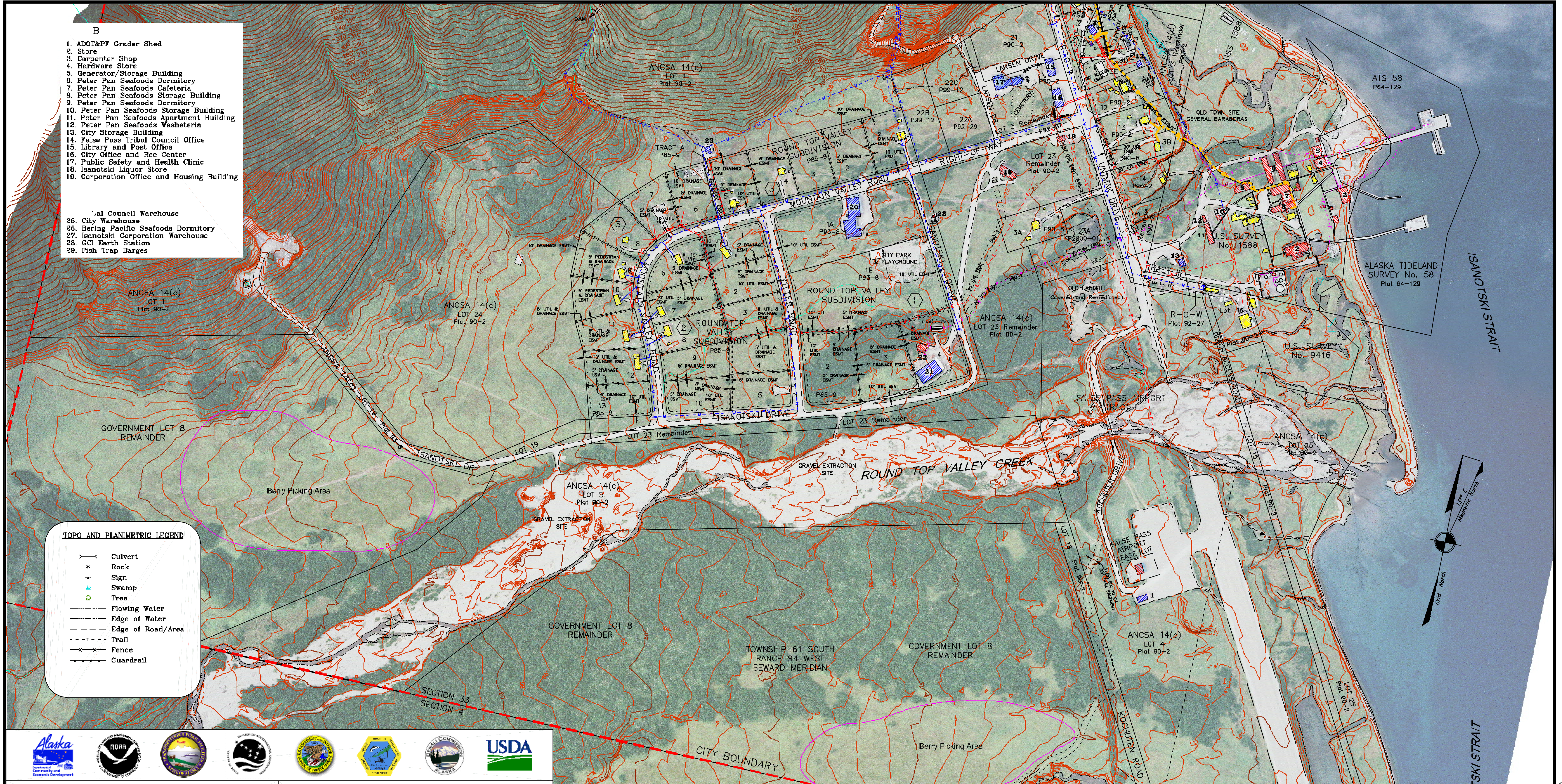


- B**
1. ADOT&PF Grader Shed
 2. Store
 3. Carpenter Shop
 4. Hardware Store
 5. Generator/Storage Building
 6. Peter Pan Seafoods Dormitory
 7. Peter Pan Seafoods Cafeteria
 8. Peter Pan Seafoods Storage Building
 9. Peter Pan Seafoods Dormitory
 10. Peter Pan Seafoods Storage Building
 11. Peter Pan Seafoods Apartment Building
 12. Peter Pan Seafoods Washeteria
 13. City Storage Building
 14. False Pass Tribal Council Office
 15. Library and Post Office
 16. City Office and Rec Center
 17. Public Safety and Health Clinic
 18. Isanotski Liquor Store
 19. Corporation Office and Housing Building
25. Tribal Council Warehouse
 26. City Warehouse
 27. Bering Pacific Seafoods Dormitory
 28. Isanotski Corporation Warehouse
 29. GC Earth Station
 29. Fish Trap Barges

TOPO AND PLANIMETRIC LEGEND

	Culvert
	Rock
	Sign
	Swamp
	Tree
	Flowing Water
	Edge of Water
	Edge of Road/Area
	Trail
	Fence
	Guardrail



Community Map FALSE PASS

54° 51' 14" N 163° 24' 32" W (NAD 27)
 Township 61 & 62 South, Range 94 West, Seward Meridian, AK
 U.S.G.S. Quadrangle "FALSE PASS D-5", Alaska
 ALEUTIAN ISLANDS RECORDING DISTRICT

LEGEND

	Residential Building		Water Line w/ Hydrant
	Commercial Building		Sewer Line w/ Manhole
	Public Building		Electric Line (Buried)
	Pole w/ Guy Anchor		Cable TV Line (Buried)
	Utility Pole		Fuel Line
	Light Pole		Easements
	Earth Station		Survey Meanders
	Antenna Tower		Proposed Lot

0 200 400 600
 SCALE IN FEET

SCALE: 1"=200'
 Date of Photography: September 14, 2003
 Magnetic Declination computed by U.S.G.S. Geomag Program using AK-2000.COF model as of April 12, 2004.

SHEET 1 of 3

MAP NOTES

This map was prepared by the Aleutians East Borough (AEB) in cooperation with the Department of Community and Economic Development (CDED) using funding from the Coastal Impact Assistance Program (CIAP) and Grant Program, Bureau of Indian Affairs Transportation Planning and funding from the Initiative for Accelerated Infrastructure Development (AIID). The

Alaska Native Tribal Health Consortium provided extensive sanitation facility records. The AEB contracted with McClintock Land Associates in May of 2002 to prepare this map.

This map is based upon a digital orthophoto prepared to National Map Accuracy Standards from August 26, 2002 photography (nominal scale 1" = 800'). An orthophoto is an aerial photo which has been corrected, by rectification to ground control stations, to remove distortions and warpage, generally caused by the ground topography and the aircraft tilt and trim.

Property and utility information has been generated from readily available sources with limited accuracy checks. Property information is not intended to represent a title search of Recorder's Office records. Utility location is approximate and shows only the main lines. Generally, the information is current as of January 2003.

This map should not be construed as a survey, on-site surveys should be conducted prior to engineering and/or construction.

COORDINATE SYSTEMS

Horizontal Datum—NAD 83 Alaska State Plane Zone 7 (feet)
 based upon postprocessed static GPS observations
 Vertical Datum—Is based upon postprocessed static GPS observations.
 The observed elevation of USGS Tidal Bench Mark 1 in False Pass is 3.56 feet.

TOPOGRAPHIC & PLANIMETRIC DATA

All topographic and planimetric data was collected utilizing stereo photography synchrograms with the photography used for the orthophoto production. Topographic data was prepared to National Map Accuracy Standards for a 2' contour interval. Topographic data located in densely vegetated areas should be considered less accurate and may not meet those standards aforementioned.

