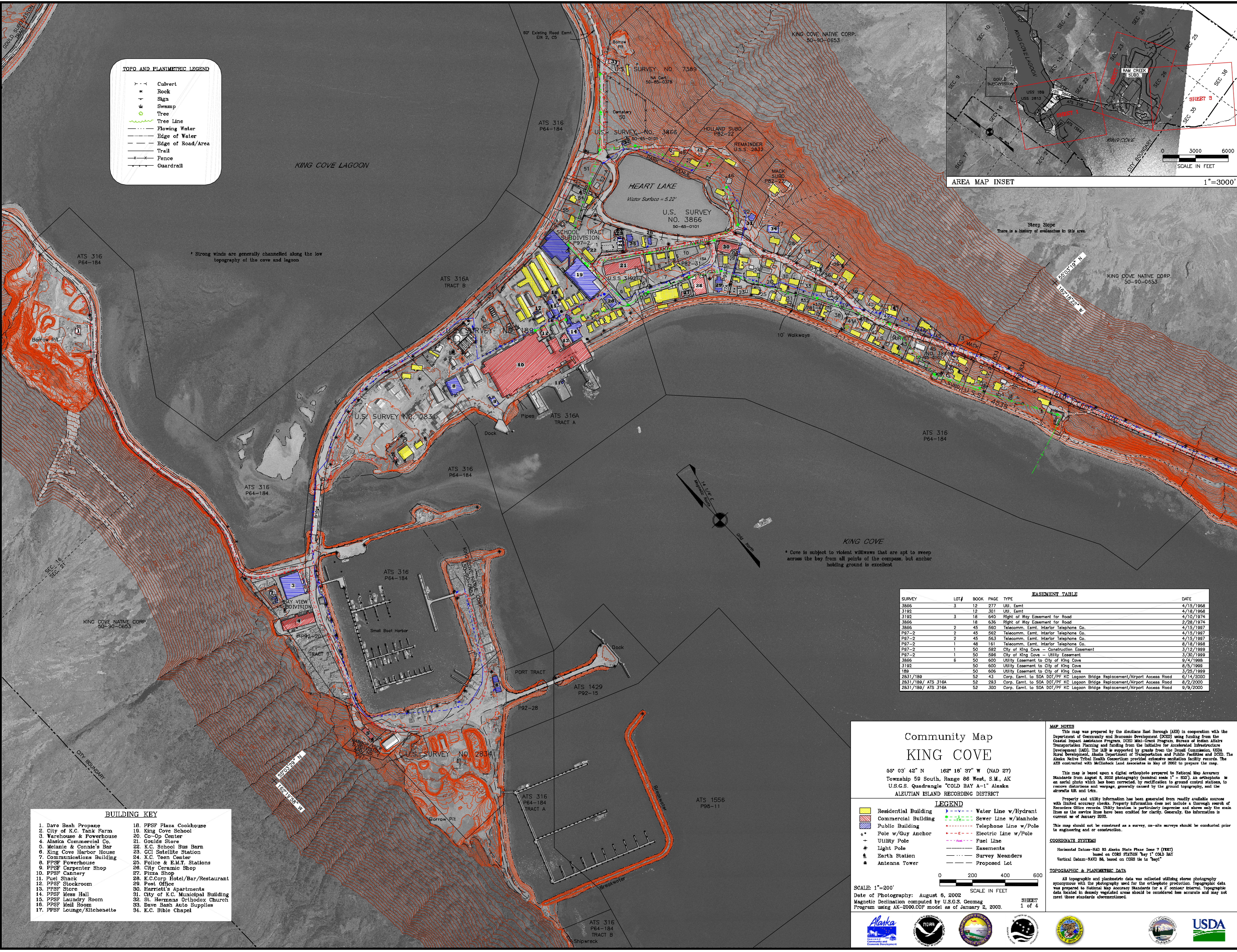
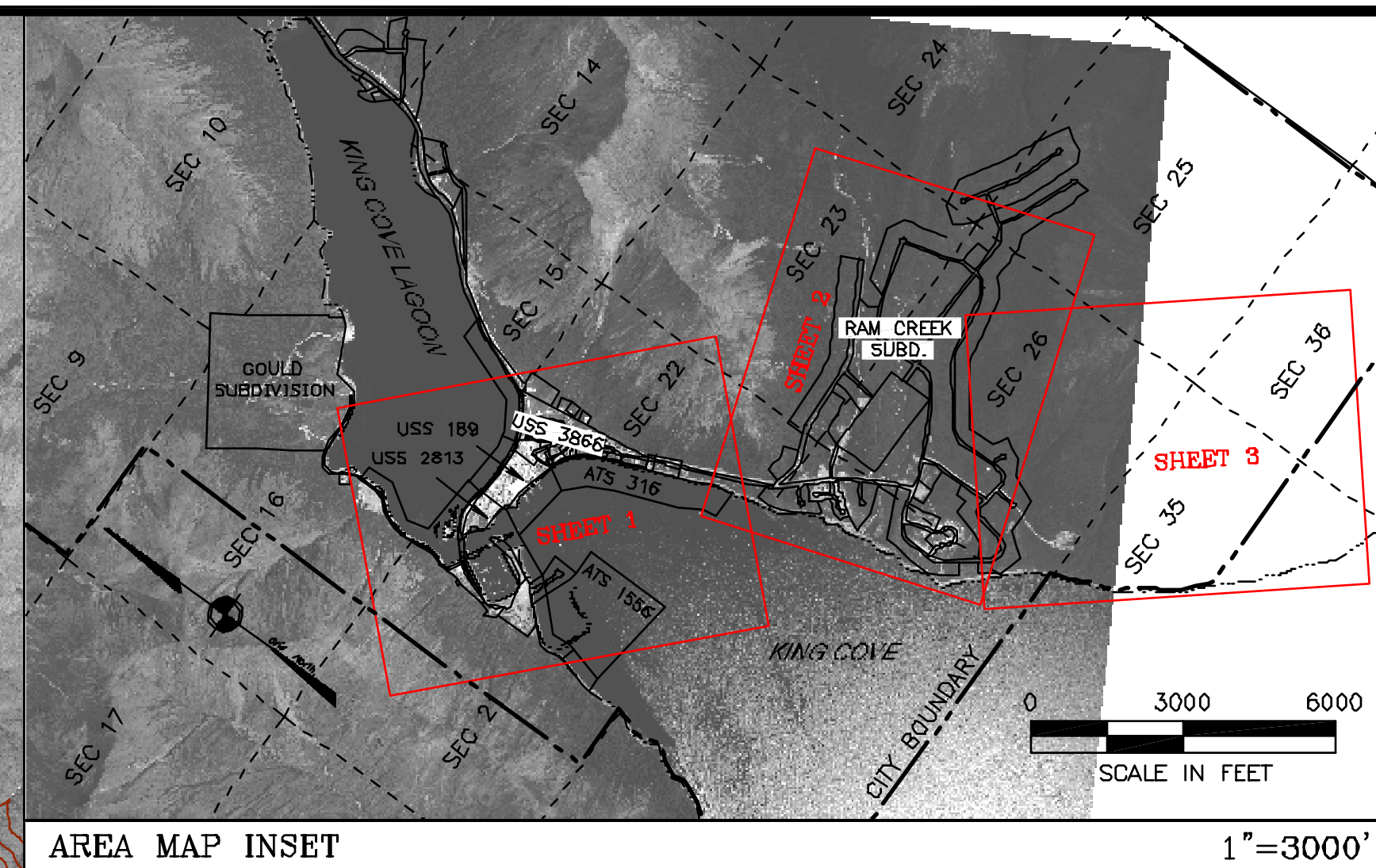


**TOPO AND PLANIMETRIC LEGEND**

- x - x - Culvert
- \* Rock
- v - Sign
- ⊕ Swamp
- Tree
- ~ Tree Line
- Flowing Water
- Edge of Water
- Edge of Road/Area
- Trail
- x - x - Fence
- Guardrail



\* Strong winds are generally channelled along the low topography of the cove and lagoon

\* Cove is subject to violent williwaws that are apt to sweep across the bay from all points of the compass, but anchor holding ground is excellent

**EASEMENT TABLE**

SURVEY	LOT#	BOOK	PAGE	TYPE	DATE
3866	3	12	277	Util. Eamt.	4/15/1968
3192	3	12	301	Util. Eamt.	4/18/1968
3192	3	18	640	Right of Way Easement for Road	4/10/1974
3866	18	636		Right of Way Easement for Road	2/28/1974
3866	2	45	560	Telecomm. Eamt. Interior Telephone Co.	4/15/1997
P97-2	2	45	562	Telecomm. Eamt. Interior Telephone Co.	4/15/1997
P97-2	2	45	563	Telecomm. Eamt. Interior Telephone Co.	4/15/1997
P97-2	1	48	161	Telecomm. Eamt. Interior Telephone Co.	8/18/1998
P97-2	1	50	592	City of King Cove - Construction Easement	3/12/1999
P97-2	1	50	596	City of King Cove - Utility Easement	3/30/1999
3866	6	50	600	Utility Easement to City of King Cove	9/4/1998
3192	50	600		Utility Easement to City of King Cove	8/5/1999
189	50	606		Utility Easement to City of King Cove	3/25/1999
2831/189	52	43		Corp. Eamt. to SDA DOT/PP KC Lagoon Bridge Replacement/Airport Access Road	6/14/2000
2831/189/ ATS 316A	52	293		Corp. Eamt. to SDA DOT/PP KC Lagoon Bridge Replacement/Airport Access Road	8/2/2000
2831/189/ ATS 316A	52	300		Corp. Eamt. to SDA DOT/PP KC Lagoon Bridge Replacement/Airport Access Road	9/9/2000

**Community Map  
KING COVE**

55° 03' 42" N 162° 18' 37" W (NAD 27)  
Township 59 South, Range 86 West, S.M., AK  
U.S.G.S. Quadrangle "COLD BAY A-1" Alaska  
ALEUTIAN ISLAND RECORDING DISTRICT

**LEGEND**

- Residential Building
- Commercial Building
- Public Building
- Foie w/Guy Anchor
- Utility Pole
- Light Pole
- Earth Station
- Antenna Tower
- Water Line w/Hydrant
- Sewer Line w/Manhole
- Telephone Line w/Pole
- Electric Line w/Pole
- Fuel Line
- Easements
- Survey Meanders
- Proposed Lot

SCALE: 1"=200'  
Date of Photography: August 8, 2002  
Magnetic Declination computed by U.S.G.S. Geomag Program using AK-2000.COF model as of January 2, 2003.

0 200 400 600  
SCALE IN FEET

SHEET 1 of 4



**MAP NOTES**

This map was prepared by the Aleutians East Borough (AEB) in cooperation with the Department of Community and Economic Development (CED) using funding from the Coastal Impact Assistance Program (CIAP) Mini-Grant Program, Bureau of Indian Affairs Transportation Planning and funding from the Initiative for Accelerated Infrastructure Development (IAID). The map is supported by grants from the Bristol Bay Area Rural Development, Alaska Department of Transportation and Public Facilities and CED. The Alaska Native Tribal Health Consortium provided extensive medication facility records. The AEB contracted with McClintock Land Associates in May of 2002 to prepare the map.

This map is based upon a digital orthophoto prepared to National Map Accuracy Standards from August 8, 2002 photography (nominal scale 1" = 833'). An orthophoto is an aerial photo which has been corrected, by rectification to ground control stations, to remove distortions and warpage, generally caused by the ground topography, and the aircraft tilt and trim.

Property and utility information has been generated from readily available sources with limited accuracy checks. Property information does not include a thorough search of Recorder Office records. Utility location is particularly imprecise and shows only the main lines as the service lines have been omitted for clarity. Generally, the information is current as of January 2003.

**COORDINATE SYSTEMS**

Horizontal Datum-NAD 83 Alaska State Plane Zone 7 (F82)  
based on CORS STATION "bay 1" COLD BAY  
Vertical Datum-NAD 88, based on CORS tie to "bay1"

**TOPOGRAPHIC & PLANIMETRIC DATA**

All topographic and planimetric data was collected utilizing stereo photography synchronized with the photography used for the orthophoto production. Topographic data was prepared to National Map Accuracy Standards for a 2' contour interval. Topographic data located in densely vegetated areas should be considered less accurate and may not meet those standards aforementioned.

**BUILDING KEY**

1. Dave Bash Propane	18. PPSF Plaza Cookhouse
2. City of K.C. Tank Farm	19. King Cove School
3. Warehouse & Powerhouse	20. Co-Op Center
4. Alaska Commercial Co.	21. Goulde Store
5. Melanie & Connie's Bar	22. K.C. School Bus Barn
6. King Cove Harbor House	23. GCI Satellite Station
7. Communications Building	24. K.C. Teen Center
8. PPSF Powerhouse	25. Police & E.M.T. Stations
9. PPSF Carpenter Shop	26. City Ceramic Shop
10. PPSF Cannery	27. Pizza Shop
11. Fuel Shack	28. K.C. Corp Hotel/Bar/Restaurant
12. PPSF Stockroom	29. Post Office
13. PPSF Store	30. Harriett's Apartments
14. PPSF Mess Hall	31. City of K.C. Municipal Building
15. PPSF Laundry Room	32. St. Hermans Orthodox Church
16. PPSF Mail Room	33. Dave Bash Auto Supplies
17. PPSF Lounge/Kitchenette	34. K.C. Bible Chapel