

Community Map NELSON LAGOON

56° 00' 03" N 161° 12' 13" W (NAD 83)
Township 48 South, Range 76 & 77 West, S.M., AK
U.S.G.S. Quadrangle "PORT MOLLER D-4", Alaska
ALEUTIAN ISLAND RECORDING DISTRICT

LEGEND

- | | | | |
|--|----------------------|--|-----------------------|
| | Residential Building | | Water Line w/Hydrant |
| | Commercial Building | | Sewer Line w/Manhole |
| | Public Building | | Telephone Line w/Pole |
| | Pole w/Guy Anchor | | Electric Line w/Pole |
| | Utility Pole | | Fuel Line |
| | Light Pole | | Easements |
| | Earth Station | | Survey Meanders |
| | Antenna Tower | | Proposed Lot |
| | Post | | |

SCALE: 1"=100'
Date of Photography: June 16, 2001 SCALE IN FEET
Magnetic Declination computed by U.S.G.S. Geomag Program using AK-2000.COF model as of January 2, 2003. SHEET 1 of 2



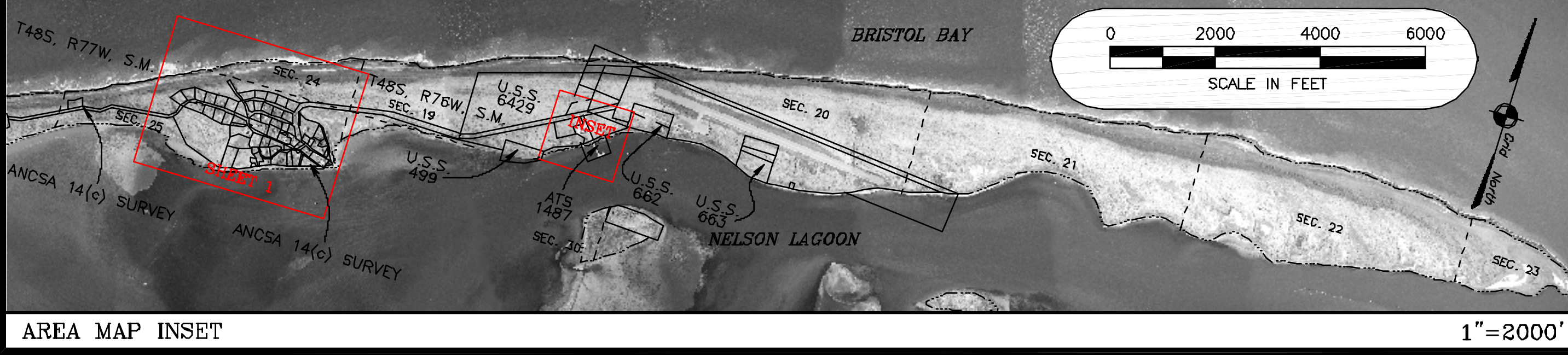
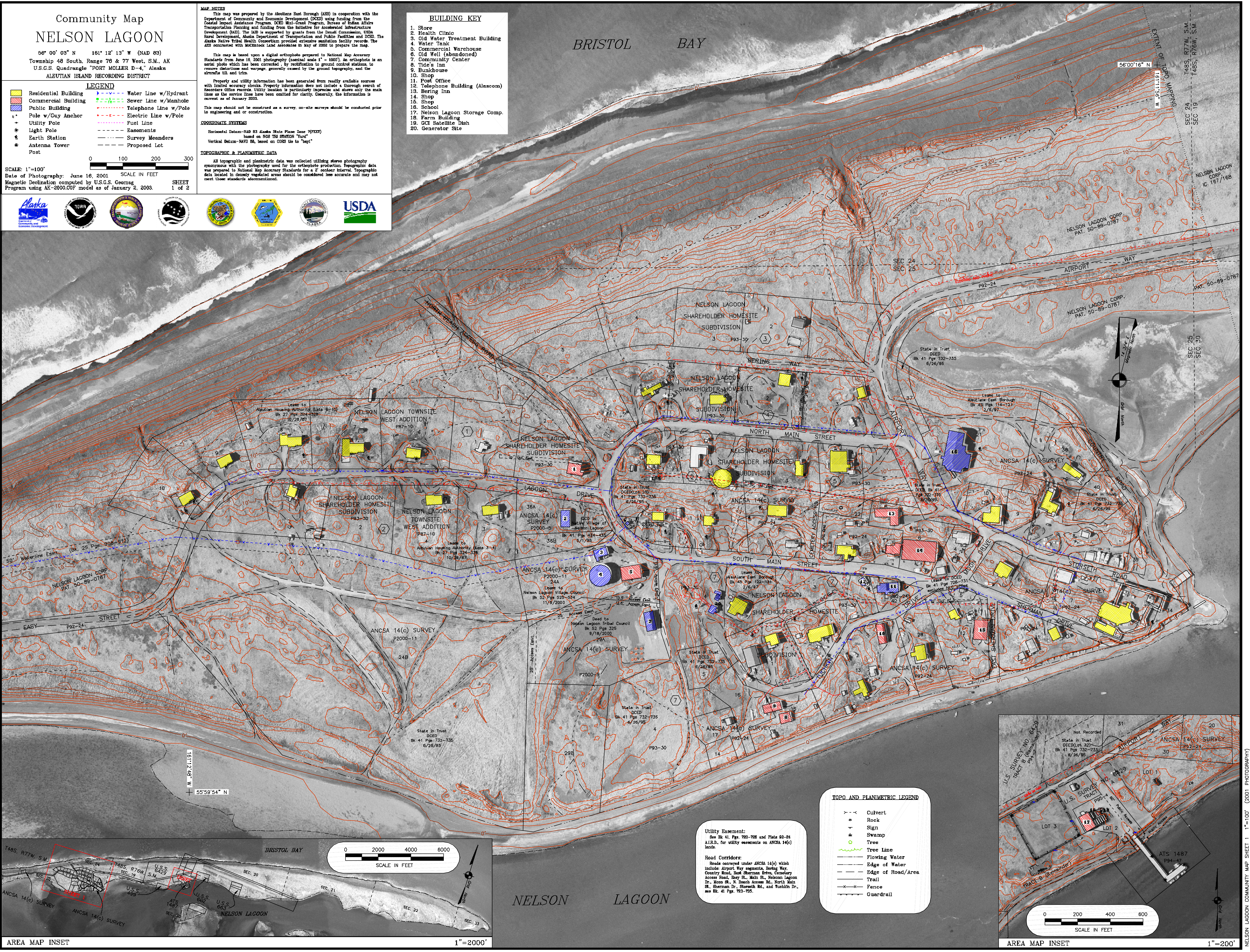
MAP NOTES
This map was prepared by the Aleutians East Borough (AEB) in cooperation with the Department of Community and Economic Development (DCEM) using funding from the Coastal Impact Assistance Program (CIAP) that is part of the Department of Interior's (DOI) Transportation Planning and funding from the Initiative for Accelerated Infrastructure Development (AIID). The AIID is supported by grants from the Denali Commission, USDA Rural Development, Alaska Department of Transportation and Public Facilities and DCEM. The Alaska Native Tribal Health Consortium provided extensive sanitation facility records. The AEB contracted with McKinstry Land Associates in May of 2002 to prepare the map.
This map is based upon a digital orthophoto prepared to National Map Accuracy Standards from June 16, 2001 photography (vertical scale 1" = 1000'). An orthophoto is an aerial photo which has been corrected, by rectification to ground control stations, to remove distortion and warpage, generally caused by the ground topography, and the camera tilt and film.
Property and utility information has been generated from readily available sources with limited accuracy checks. Property information does not include a thorough search of Recorder's Office records. Utility location is particularly imprecise and shows only the main lines as the service lines have been omitted for clarity. Generally, the information is current as of January 2003.
This map should not be construed as a survey, on-site surveys should be conducted prior to engineering and/or construction.

COORDINATE SYSTEMS
Horizontal Datum-NAD 83 Alaska State Plane Zone 7(FEET) based on NGS TM STATION "TARD"
Vertical Datum-NAD 83 based on CGSD 86 to "Geoid"

TOPOGRAPHIC & PLANIMETRIC DATA
All topographic and planimetric data was collected utilizing stereo photography synchronized with the photography used for the orthophoto production. Topographic data was prepared to National Map Accuracy Standards for a 2" color lateral. Topographic data located in densely vegetated areas should be considered less accurate and may not meet those standards elevations.

BUILDING KEY

1. Store
2. Health Clinic
3. Old Water Treatment Building
4. Water Tank
5. Commercial Warehouse
6. Old Well (abandoned)
7. Community Center
8. Tide's Inn
9. Bunkhouse
10. Shop
11. Post Office
12. Telephone Building (Alascom)
13. Boring Inn
14. Shop
15. Shop
16. School
17. Nelson Lagoon Storage Comp.
18. Farm Building
19. GCI Satellite Dish
20. Generator Site



UTOPI AND PLANIMETRIC LEGEND

	Culvert
	Rock
	Sign
	Swamp
	Tree
	Flowing Water
	Edge of Water
	Edge of Road/Area
	Trail
	Fence
	Guardrail

Utility Easement:
See BK 41, Pgs. 728-726 and Plans 90-24 A.I.R.D. for utility easements on ANCSA 14(c) lands.

Road Corridors:
Roads occupied under ANCSA 14(c) which include Airport Way segments, Boring Way, Country Road, East Sherman Drive, Cemetery Access Road, Hwy 6, Main St., Nelson Lagoon Dr., Moose St., N. Beach Access Rd., North Main St., Sherman Dr., Storvick Rd., and Tushkin Dr., see BK 41 Pgs. 763-765.

